

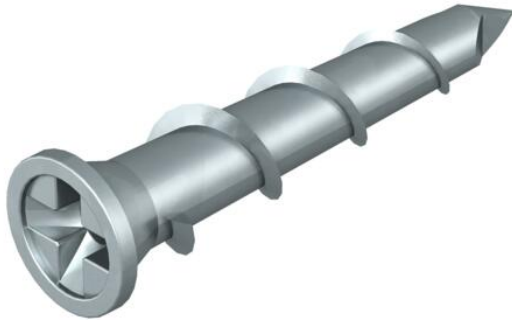
Technical data sheet

Plasterboard anchor

Item number: 3483239



To fasten components to plasterboard or fibre composite plates.
Min. plate thickness: 5 mm.

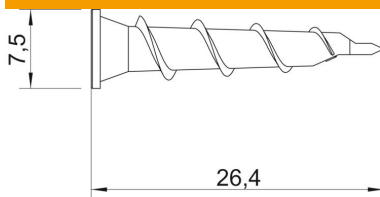


Zn Die-cast zinc

Master data

Item number	3483239
Type	910 GKSM 6x25
Description 1	Plasterboard screw
Manufacturer	OBO
Dimension	Ø6x25
Material	Die-cast zinc
Smallest sales unit	100
Unit of quantity	Piece
Weight	0.16 kg
Weight unit	kg/100 pc.

Dimensions



Length	26.4 mm
Dimension D	7.5 mm
Dimension L	26.4 mm

Technical data

With thread	yes
With bolts	no
Permitted load range, tension zone	0.04