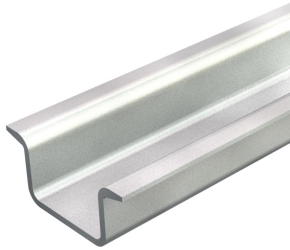


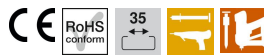
Technical data sheet

GTP hat profile rail, unperforated

Item number: 1115553



Hat profile rail 35 x 15 mm to DIN EN 60715 (formerly DIN EN 50022).



St Steel

GTP Electrogalvanized, transparently passivated

Master data

Item number	1115553
Description 1	Top hat rail
Description 2	unperforated, 2.25 mm thick
Manufacturer	OBO
Dimension	2000x35x15
Material	Steel
Surface	Electrogalvanized, transparently passivated
Surface standard	
Smallest sales unit	2
Unit of quantity	Metre
Weight	97 kg
Weight unit	kg/100 m
CO Footprint (GWP) Cradle-to-Gate	4,728 kg COe / 1 Meter

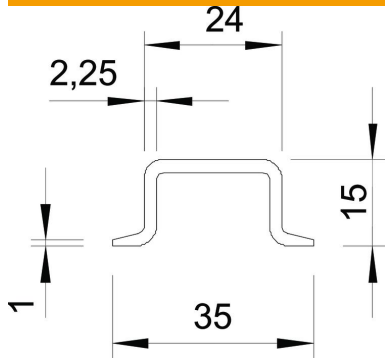
Technical data sheet

GTP hat profile rail, unperforated

Item number: 1115553



Dimensions



Length	2,000 mm
Width	35 mm
Height	15 mm

Technical data

Version for	Unperforated
Version, rails	Support rail DIN EN 60715
Bundle	20 m
Hole shape (ETIM)	Without
Material thickness	2.25 mm